

PART OF N.W. 1/4 OF SECTION 15, T.6N., R.1W., S.L.B. & M.

# STETTLER SUBDIVISION NO. 2

## BLOCKS 2 & 7

IN OGDEN CITY  
SCALE 1" = 50'

TAXING UNIT: 25

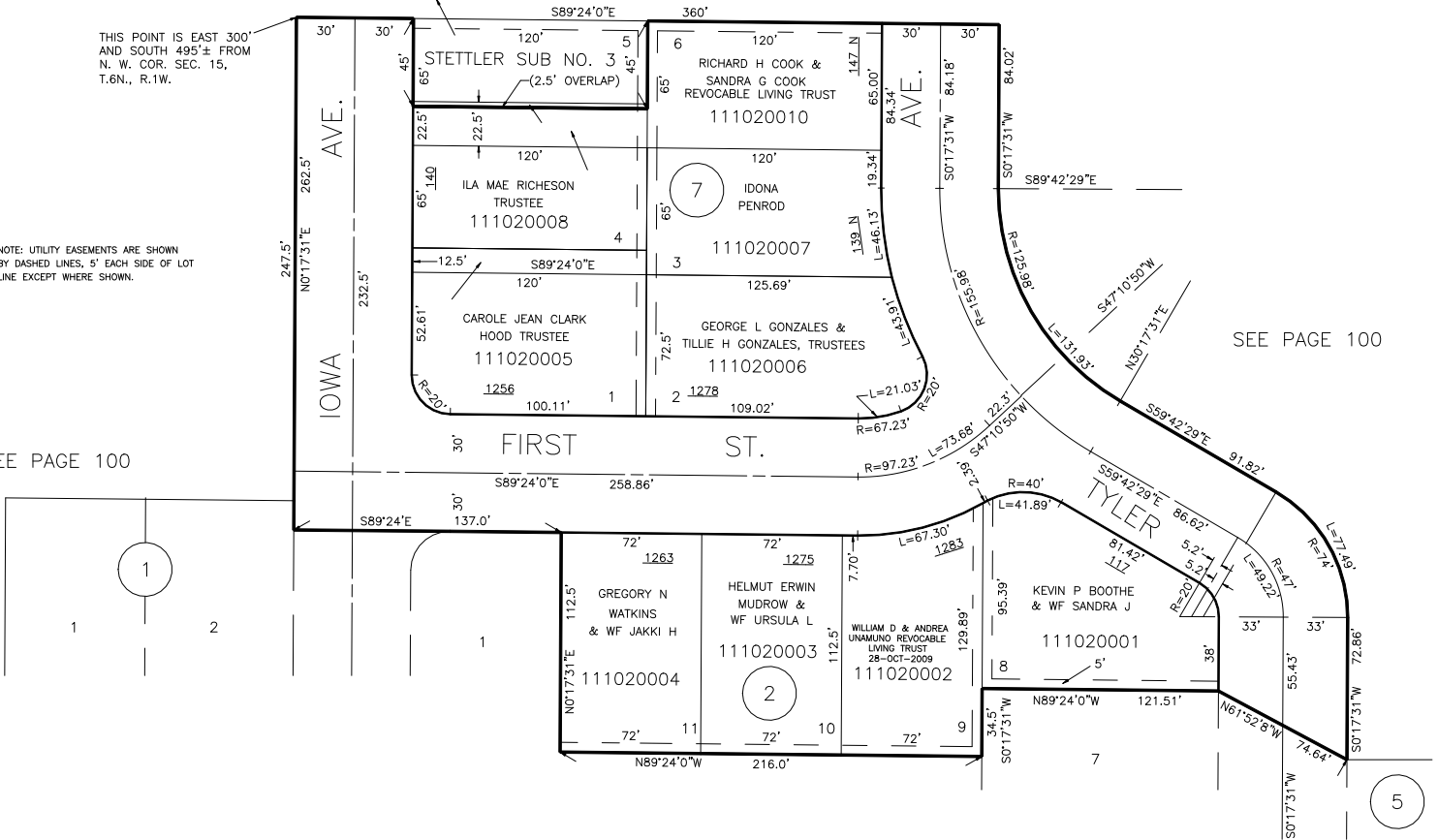
SEE PAGE 104

THIS POINT IS EAST 300'  
AND SOUTH 495'± FROM  
N. W. COR. SEC. 15,  
T.6N., R.1W.

NOTE: UTILITY EASEMENTS ARE SHOWN  
BY DASHED LINES, 5' EACH SIDE OF LOT  
LINE EXCEPT WHERE SHOWN.

SEE PAGE 100

SEE PAGE 100



FOR COMPLETE ENG DATA SEE  
ORIGINAL DEDICATION PLAT IN  
BOOK 12, PAGE 47 OF RECORDS.